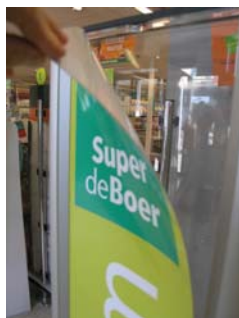




## MTC SG I Mono 8.2 MHz no. XS-R1MPAL8C

### RF Systems

The SG1(mono) 8.2 Mhz antenna has the same attractive design as the successful SG2 dual 8.2Mhz antenna system. Both systems share the same design aluminium profiles in combination with high quality plexiglass which fits perfectly into any modern retail environment.



The superior transceiver electronics of the SG1 employ moving field detection in combination with a 2 antenna loop. The SG1 offers a true wide aisle solution and is ideal for retailers using RF paper labels. Both the SG1 and SG2 offer the possibility to insert advertising panels as shown in the pictures. Mentioned advertising panels can be inserted and removed within seconds. The SG series are compatible with all available MTC 8.2 MHz labels and tags.



### Specifications

|                  |   |
|------------------|---|
| Dimensions:      | 37.4 x 167.0 x 4.2 cm   |
| PulseTechnology: | 8.2 MHz   |
| Moving Fields:   | 2 Loops (transmitter/receiver)  |
| Detection Range: | Up to 0.9 m both sides, (When using 4x4 PL)<br>Up to 1,10m both sides,(When using 5x5 PL)<br>Up to 1,30m both sides, (Using tags, 5 cm) |
| Power Supply:    | 18 volt 2 amp 110 / 230 volt  |